

The Parish Builder

ST. LUKE'S LUTHERAN CHURCH - 5150 WILSON ST. LA MESA, CA 91942
www.st-lukes-la-mesa.org

October 2009
Volume 9 Issue 10
Monthly Newsletter

Reformation Time

October is when Lutherans and other Protestants observe the beginning of the Reformation. Luther published his 95 Theses against indulgences on 31 October 1517. To mark the occasion, Luther has a few things to say:

“Since then your serene majesty and your lordships seek a simple answer, I will give it in this manner, neither horned nor toothed: Unless I am convinced by the testimony of the Scriptures or by clear reason (for I do not trust either in the pope or in councils alone, since it is well known that they have often erred and contradicted themselves), I am bound by the Scriptures I have quoted and my conscience is captive to the Word of God. I cannot and I will not retract anything, since it is neither safe nor right to go against conscience. I cannot do otherwise, here I stand, may God help me, Amen.” (LW 32:111)

“The scriptures speak of Christendom very simply and only in one way, ... that Christendom is an assembly on Earth of all believers in Christ as we pray in faith, “I believe in the Holy Spirit, a community of the saints.” This congregation or gathering is (the assembly) of all those who live in proper faith, in hope and in love, in such a way that the essence, life, and the nature of Christendom does not mean a bodily assembly but an assembly of hearts in one faith; as Paul in Eph. 4:5 says, “One Lord, one faith, one baptism”.

Therefore, even if they are separated outwardly from one another by a thousand miles, nevertheless they are an assembly in the Spirit because each preaches, believes, hopes, loves, and lives as the other, as we sing in the Holy Spirit, “You have assembled all languages in the unity of faith.”

Now, this really means a spiritual unity by which human beings are called a congregation of the saints. This unity is solely enough to make Christendom. Without it there is no unity of Christendom, whether that unity is of the city, time, person, deed or whatever it might be” (WA 6: 292, 35-293, 12).

We invite you to join St. Luke's Lutheran Church.

Please contact Judy in the office to discuss membership or to arrange an appointment with the pastor:
619-463-6633 or office-sllc@att.net

Office hours are:
Monday - Friday, 8:00 a.m. - 5:00 p.m.

Table of Contents

Pastor Mark	page 1
Pastor Mark/	page 2
Treasurer	page 3
WELCA/Outreach	page 4
Outreach	page 5
Parish Potpourri /Picnic Pics.	page 6
Worship Text/Heifer Intl.	page 7
Prayer Calendar	page 8
Birthdays/ Worship Teams	page 9
Church Event Calendar	page 10

Email Us Your Email Address

***Please note our new email address!**

St. Luke's hopes to increase its methods of communication. Email is a fast and cost effective way to communicate. Please send the church office your email address (office-sllc@att.net) and please indicate how often you check your email. We will not distribute your address beyond the church office and any blanket emails to the congregation will not list individual addresses.

Continued from page 1

“It is earnestly commanded that no one in the church dare to prescribe or to do something (be it little or much, small or large) from one’s own understanding or upon the counsel and opinion of a human being. Instead, whoever wishes to teach or do something there, should speak and do it in such a way that he is certain beforehand that that, which he speaks and does, is truly God’s word and work, commanded by Him. Or, he should leave his preaching and office and do something else in the meantime. In the same way, the others should also hear, believe, or accept nothing other than that which is commanded by the sure witness of divine word and command. Then, God desires to have no trifling, and it is important to the salvation of the souls which are thereby led into eternal harm and depravity where this rule and command are not maintained” (WA 21: 422, 33- 423, 5).

“Now we can boast joyfully and truthfully that the entire papacy is not hostile to us for any secular cause. For the papists cannot say—unless they want to lie about it publicly—that they hate and persecute us for any vice and depravity; but all their enmity is due to our refusal to believe what they want us to believe. It all revolves about matters of faith, the Word, and the Sacrament. And now, of course, we can say proudly and confidently: The Gospel which we preach and also the Baptism and Sacrament which we receive and administer are, after all, not ours but our Lord Christ’s.

We did not invent these, nor did we create and institute them; but they were revealed to us by God, ordained and given to us through Christ, in whom we are baptized and called and in whom we believe. And since we confess these and want to deliver consciences from error and to direct them to Christ, we incur the world’s hatred and enmity.” (LW 24: 14).

What A Great Day!

We wish to thank Parish Education and all the other committees involved in our Open House and Congregational Picnic held on Sunday, 20 September. It was a grand day.

The open house displays in the Family Center were extremely well done, very inviting. It is amazing how much St. Luke’s has to offer. Well done Parish Ed!

The picnic starting shortly thereafter was as billed, good and old-fashioned. We had lovely food and fellowship. We had games. We even had a rather water balloon toss that got a little exuberant. We wish to thank Lyle and Pat Swanson for spearheading the picnic. We also thank Eugenio Cruz for lending the church his massive tarp for shade, and we thank him, Patrick, Tommy, Corey, and others for putting it up. The church is hoping to receive some TARP funds to cover the costs.

St. Luke's is very proud of its library.

With the development of St. Luke's Theological Academy, our library will hopefully become a more valued part of our ministry. The library, however, is in need of someone to assume "day to day" care of the library. If you have an interest in helping maintain and expand our library, we can provide you with the necessary training to do so. Please contact Pastor Mark or the office if you are interested.

Intro to the Christian Faith

As you may be aware, St. Luke's is launching what we are calling a "theological academy." This is mainly an opportunity for adult members to gain an overview of theological disciplines and gain recognition (diploma) of their learning.

In the course of time, slight pun intended, we hope to have 10-15 week modules in New Testament, Old Testament, Church History, Worship and Music, and Reformation theology. The foundation course, information below, will serve as a new members course and as the first module.

The information in this module will be fairly basic, covering some material already presented by me at Wednesday Night Live (WNL). So, regular attendees of WNL may not find this module particularly interesting.

Only this first module will be offered this year twice (Autumn 2009 - Spring 2010). It is hoped that we can find some outside lecturers to cover some of the other modules in the course of time.

Title: An Introduction to the Christian Faith

Instructor: Mark Menacher

Place: St. Luke's Lutheran Church

Day: Sundays

Time: 4:00-5:30 pm

Beginning Sunday, 27 September, this ten week course will serve both as a new member class and as Module One for the Academy's diploma in theological studies. Please contact the church office to register for this course.

Mark Menacher

pastor-mark@st-lukes-la-mesa.org »

6th ANNUAL CONFERENCE ON CHRISTIANITY AND CULTURE

THEME:

*“Why I Am a Lutheran – The Word
the Spirit, and the Sacraments”*

SPEAKER:

Rev. Daniel Preus, Director of the
Luther Academy

REACTORS:

Rev. Brandon Jones, St. Pauls
Lutheran Church, Long Beach, CA
Rev. Dr. John Bombaro, Grace
Lutheran Church, San Diego, CA

WHEN:

Saturday, October 10th, 2009, from
9:00am-3:45pm

WHERE:

St. Paul Lutheran Church
1418 Bear Valley Pkwy.
Escondido, CA 92027

Coffee and doughnuts will be available at 8:30am and the conference will open with Matins at 9:00. A reactor and Q & A time will follow both the morning and afternoon presentation.

The day will conclude with a panel discussion and Vespers. Lunch will be provided.

There is no fee for attending.

Free-will Donations are welcome to help offset some of the cost.

Please register by September 25th.

*For more information call Rev. Robert Lawson:
760-743-4440, or send an email to
rlawson@nethere.com*

TREASURER NOTES

St. Luke's Financial statement is located in the Library for inspection by anyone wishing to view it.

Terry East
Treasurer

Fun and Fellowship:

Anyone who is interested in signing up for the fall fellowship dinner opportunity may do so after church any Sunday through October 11. Hosts will be setting dates for the dinner between October and early November. If you participated in the spring dinners there is no need to sign-up again. Sign-up in the lower level or call Jennifer 460-6909.

You can always go to St. Luke's web site to see what's happening... here is our new web page address....

www.st-lukes-la-mesa.org

WELCA

Summer has come to a close and WELCA is gearing up for a great fall. The joint Bible Study in July and Baby Shower in August were both well attended and enjoyed.

WELCA was part of the church -wide Open House on September 20. The WELCA display featured the many projects in which ladies of the church participate. The creative output of the Project Day ladies including quilts, baby layettes and personal care packages were featured. The Solar Cooker Project which was supported by our Mothers and Others Luncheon offerings were also on display. Various other interests and opportunities for the ladies of St. Luke's were available for viewing.

Deborah Circle meets every third Thursday at 10:00 a.m. JoAnn Hendrickson (462-7184) is the contact person.

Circles have reconvened. Please consider joining either the morning or evening circle even if you are not able to attend on a regular basis. All are most heartily welcome.

Rebekah Circle meets every second Tuesday at 7:00 p.m. Betty Wiedmer (465-7480) is the contact person.

Ladies, as you give your thankoffering at each circle meeting, please know that your generosity spreads beyond our congregation. The WELCA board carefully considers numerous requests for donations at each of its monthly meetings. We continue to support the children and families of Avondale School, both with school supplies and food vouchers. In addition, this month WELCA voted to support the Alliance for Children, Lutheran Social Services, Lutheran Border Concerns and Africa Inland Missions.

The goal of the board is to be good stewards of your offerings. We spread our giving throughout the year, and make sure that there is a reserve should there be an immediate need. We thank you for your continued support.

Have you noticed some very familiar and professional voices as you call the church office from time to time? When our own dear Judy has to be away from the office or is on a well-deserved vacation, WELCA ladies are on call to fill in.

Hazel Knippelmeyer, Marie Handley, Loraine Winger, Marge Hersom, Bev Holland, and Pat Swanson are a few of the kind ladies whose voices you might hear on the line. Thank you ladies for your quiet, dedicated service to St. Luke's.

FALL SONSHINE CLUSTER EVENT will be held on Saturday, October 17, 2009 at St. Mark's Lutheran Church at 580 Hilltop Drive, Chula Vista, California. Call Joyce Boutte (619 463-6734) for reservations by October 12. The guest speakers will be Penny Hovick and Sheri Bengston who tell about their recent trip to El Salvador to build homes "to give at hand up, not a hand out". Luncheon will be served. The cost is \$6.00. On-site registration is a 9:30. The program begins at 10:00.

OUR ON-GOING OUTREACH

MANY THANKS TO ALL WHO SERVED the homeless downtown on August 31: MAGGIE SIMMONS, MARGE HERSOM (on her birthday!), MARIE HANDLEY (a first-timer), PHYLLIS FOWLER, RANDY ENGEL, and MARTHA APPLE-GATE. Our next serving date is October 5.

TACO'S "SUNSET BY THE SEA"

will be well attended by St. Luke's. Six members plan to attend this fund-raising event on Saturday, October 10, from 4:30-7:30 p.m. at the home of Drs. Rup and Vani Nagala in La Jolla. The location was donated by the doctors, both longtime friends and supporters of TACO. According to publicity there will be great food and drink and an auction, as well as fun and fellowship. "SUNSET BY THE SEA" is TACO's largest fundraiser, and all proceeds from the auction go directly to support the ministry of serving the homeless and working poor. According to a recent "blurb" from TACO's volunteer coordinator, 2,000 meals were served in August, and 100 DOZEN donuts were consumed, along with 1,000 cups of coffee!

ST. LUKE'S SECOND ALTERNATIVE CHRISTMAS GIFT FAIRE!

will be held Sunday, November 8, in the Lower Level, immediately after worship services. It's October and not too early to think of the opportunity you will have to buy a few gifts, especially for those family members/friends who already have EVERYTHING! And it's an opportunity to give to a worthy cause in his/her/their name.

Listed below are the nonprofit organizations involved in this endeavor:

FLORESTA

Floresta USA, is a Christian non-profit organization that reverses deforestation and poverty in the world by transforming the lives of the rural poor. Recognizing that environmental degradation and poverty are closely linked, Floresta works to empower farmers through community development, discipleship, innovative agro-forestry techniques, and by providing access to savings and credit. They plant, teach, create enterprise, and share the Gospel.

Floresta ministers are in the Dominican Republic, Haiti, Mexico, Thailand, Tanzania and Burundi and has reached the lives of more than 100,000 rural farmers in over 225 communities. Floresta empowers farmers to help themselves through innovative agriculture, forestry, micro-enterprise, and discipleship. You can make a difference by contributing:

\$5 = 5 Tree seedlings

\$10 = 10 Tree seedlings

\$30 = Sponsor a village for one month

\$75 = Sponsor agricultural training for farmers in one community for one month.

GUATEMALA MISSION PROJECT

Guatemala Mission Project is a mission of the San Diego District of the United Methodist Church. It assists the people of Guatemala to be self sufficient. Working teams have been sent to the highlands of Guatemala, serving primarily poor indigenous persons since 1992. In July 2009 they were able to install 1120 efficiency wood-burning stoves in the homes of 60 families, saving money, improving health conditions, and reducing the consumption of wood by 66%.

The Project helped fund and complete the construction of a dental clinic, also.

GMP is currently looking for sponsors for most of the 65 children and young people they provide school scholarships for every year. The scholarships make it possible for very poor children to continue their education, instead of working for their family in the fields. For \$75-elementary, \$100-middle school and \$150-high school and technical schools, basic school supplies, fees, and back packs for each child can be provided. Through donations and sales of Guatemalan handcrafted items bought from cooperatives and small family-run businesses, they raise the funds to do the projects in Guatemala.

THE TOMORROW PROJECT

Helping Women Create Futures Today: Homeless women learn job-readiness skills and small business expertise in a nurturing environment at The Tomorrow Project, a program of Rachel's Women's Center, sponsored by Catholic Charities. Assembling and selling unique chef-created soup mixes and other food items teaches life skills and empowers women hampered by poverty and unemployment to change their lives.

Their wonderful soup mixes will be available and are guaranteed to make great gifts!!

HEIFER INTERNATIONAL

(Most St. Lukean's know all about this). Heifer International is an international Christian-based, non-profit organization that sends income-producing animals and livestock to communities in the United States and third world countries. It offers intensive training in animal husbandry, environmentally sound and sustainable farming, and community development. Communities are strengthened as families join together to plant fodder, build pens and learn to care for their animals without harming the environment. Each project partner is then able to pass on offspring of the gift of pregnant livestock to another family in need.

HEIFERS:	\$50 a share
GOATS, SHEEP, PIGS:	\$10 a share
LLAMAS:	\$20 a share
CHICKS, DUCKS	\$20 a flock
TRIO OF RABBITS	\$60
BEES	\$30

MARTHA STAUDERMAN JEWELRY COLLECTION, SEASONAL GIFTS, AND HANDMADE PRAYER JOURNALS (Martha is joined by fellow jeweler, Lynn Moss)

These beautifully unique pieces begin with vintage inspiration and materials recreated with Martha's modern flair. Martha and Lynn are donating 20% of their proceeds to ST. LUKE'S YOUTH, so shop for everyone on your list.....and ladies, even for yourself!!

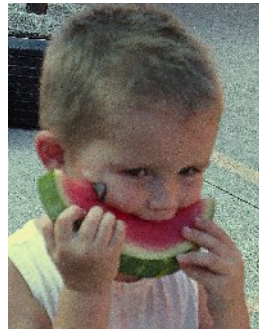
PARISH POTPOURRI

BEV HOLLAND is spending three weeks in Gales Ferry, Connecticut, with her daughter, NANCY DUWELIUS, and family. NANCY has had extensive back surgery, so BEV is needed to care for her plus grand-daughter, QUINN, and husband, RICHARD.....Did you know our own JIM DOLAN was on the La Mesa Northern Little League team that participated in and won the world series in 1961? JIM and another team member, CHICO LEONARD, watched this year's world series final game at Oggie's in Chula Vista!!.....They are engaged!!! Our own ANDY KILLION and STEPHANIE JEFFREY have set the date: wedding bells will ring next July 17th! Congratulations to you both!.....Perhaps some of you heard TORI HAUK'S presentation on the radio, via your computers, as you listened to her play a flute concerto at the University of Arizona during the spring semester last year. TORI met the composer of this technically difficult piece in New York when she was there attending the National Flute Players Convention.MARGI and DAVE BULLER spent a week recently helping build a straw bale house on the Hopi Indian Reservation. They did this last year, too. What an incredible experience! You can learn more about the nonprofit organization that accomplishes so much by visiting their website: redfeather.org.....What nationality is Santa Claus? --- North Polish!!

Just a thought....

It is not the Lord's way or his plan to take away our hardships and difficulties. It is these challenges that give us the opportunity to grow in faith, character, and understanding. And, if we won't give up, he will be at our side to help us see them through these difficult time!

Joe Pace

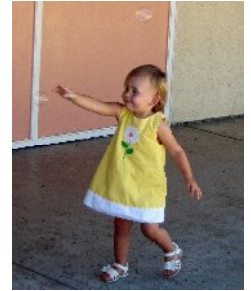


Mmmmm Picnics are Great!



Mother & Daughter

ST. LUKE'S PICNIC



Bubbles

FUN, FUN, FUN



What's a picnic without chicken and hotdogs.



Face Painting



Cake Walk



Water Balloon Toss



Fellowship

Throw it, I'll catch it! I'm waiting.....



Sack Race

OCTOBER WORSHIP TEXT

HEIFER INTERNATIONAL.....

.....THROUGH THE YEARS:

HEIFER MILESTONES

- 1940 The first shipment of 17 heifers leaves York, PA and arrives in Puerto Rico. Heifer sends thousands of cattle and horses to rebuild war torn Europe.
- 1950 An estimated half of the chickens in Korea are descended from Heifer hatching eggs supplied after the Korean War.
- 1960 First projects start in Africa.
- 1970 World headquarters moves to Little Rock and Heifer Ranch is purchased.
- 1980 Heifer Ranch transitions from a livestock facility to a learning center.
- 1990 Central and Eastern Europe program starts after fall of communism. Heifer named as one of "Seven Ways to Change the World" by The National Peace Corps Association.
- 2000 Heifer is awarded InterAction's first Mildred Robbins Leet Award for Advancement of Women for integrating women into field programs. Heifer celebrates its 3 millionth "Passing on the Gift" in China. Heifer moves quickly to help survivors of the Asian tsunami begin the long road to recovery. Heifer awarded \$42.8 million from Bill and Melinda Gates Foundation for the East Africa Dairy Development.
- 2009 Heifer Village opens on Heifer International Campus, housing the Murphy Keller Education Center.

IN THEIR OWN WORDS:

Lydia Chelangat-Mutai, a legally Blind Heifer recipient, Kenya: "My cow is my treasure and vision. No longer do I sit alone in total darkness, but work as a farmer."

Kotyck Maria Dmytrivna, 69, Ukraine: "I am taking care of two children for the last nine years. My son left these children after their mother died. I have had to pay for everything on my own pension (\$20 a month). Heifer International has been our savior. Without this cow, these children surely would have died."

4th

Time after Pentecost

First Lesson—Genesis 2: 18-24
 Second Lesson—Hebrews 1; 1-4; 2: 5-12
 Gospel—Mark 10: 2-16

11th

Time after Pentecost

First Lesson—Amos 6: 6-7, 10-15
 Second Lesson—Hebrews 4: 12-16
 Gospel—Mark 10: 17-31

18th

Time after Pentecost

First Lesson—Isaiah 53: 4-12
 Second Lesson—Hebrews 5: 1-10
 Gospel—Mark 10: 35-45

25th

Time after Pentecost

First Lesson—Jeremiah 31: 31-34
 Second Lesson—Romans 3: 19-28
 Gospel—John 8: 31-36

MEMORIAL GIFTS

**Donna Bohnsack Memorial
 Glen Bohnsack**

PARISH BUILDER ARTICLES

For November 2009

Due in the office

October 16th

Thank you, Judy

**OCTOBER
PRAYER CALENDAR**

1	Luke 18: 9-14	
2	Romans 12: 3-8	
3	Galatians 3: 23-29	
4	Psalms 70: 1-5	
5	Mark 2: 1-12	<i>"The eyes of all look to you, and you</i>
6	Acts 4: 5-12	<i>give them their food in due season.</i>
7	Colossians 1: 9-14	
8	Psalms 104: 31-35	<i>You open Your hand; and satisfy</i>
9	John 5: 18-24	<i>the desire of every living thing.</i>
10	I Thessalonians 2: 13-16	
11	Psalms 45: 1-11	<i>The Lord is righteous in all His</i>
12	Acts 16: 25-34	<i>ways and kind in all His works.</i>
13	Colossians 2: 6-15	
14	Romans 16: 25-27	<i>The Lord is near to all who call</i>
15	II Corinthians 9: 10-15	<i>on Him, to all who call on Him in</i>
16	Ephesians 1: 3-10	<i>truth.</i>
17	Proverbs 4: 1-9	
18	Luke 7: 11-17	<i>He fulfills the desire of those who</i>
19	Mark 1: 1-13	<i>Fear Him; He also hears their cry</i>
20	I Peter 1: 22-25	<i>and saves them.</i>
21	Romans 8: 26-30	
22	I Thessalonians 4: 13-18	Psalm 45: 15-19
23	I Corinthians 2: 1-5	
24	Isaiah 40: 9-11	
25	Jonah 2: 1-10	
26	Matthew 5: 1-12	
27	Romans 5: 6-11	
28	Psalms 56: 8-13	
29	Luke 22: 31-34	
30	Luke 10: 38-42	
31		



OCTOBER BIRTHDAYS

Louis Alfeld
 Tori Hauk
 Jack Hendrickson
 Gail Knippelmeyer
 Matthew Mylerberg
 Cindy Rigopoulos

DID YOU KNOW!

Our monthly newsletter is printed free because of generous people / companies that advertise. It is true, and we need to let these generous people know that we appreciate them. If you are in need of a mortuary services,

PLEASE CALL and THANK. ...

FEATHERINGILL MORTUARY

Make sure you tell them you heard about them from our newsletter!

Where's Ted?

(NO, this is not a St. Luke's version of Where's Waldo)

As many of you know, I work for the County of San Diego Dept. of Agriculture/Weights and Measures. I have recently been assigned to the Plant Health/Pest Prevention program, where I will be the handler of the second detector dog team for parcel inspection. However this means I have to attend training in Newnan, GA for ten weeks with the dog. So, I will be leaving October 4th and returning December 11th. I have already researched it and there are at least 4 Lutheran Churches in the area I can foist myself off on. If I can't be with you in person, I can be with you in worship. Be good to one another and I'll see you December 13th.

Your friend in Christ,
 Ted

OCTOBER WORSHIP TEAMS	
October Reader October Altar Guild	<i>Billy Miles Hazel Knippelmeyer</i>
4th Communion Assistant— Bread	<i>Lyle Swanson</i>
Prayers of the People	<i>Pastor Mark</i>
Projectionist	<i>Gail Knippelmeyer</i>
Communion Assistants—Wine	<i>Bruce Fowler, George Moore</i>
Greeters	<i>Loraine Winger, Bonnie Fuller</i>
Usher Team	<i>Randy Engel</i>
11th Communion Assistant—Bread	<i>Shirley Carrington</i>
Prayers of the People	<i>Marge Hersom</i>
Projectionist	<i>Hazel Knippelmeyer</i>
Communion Assistants—Wine	<i>Gene & Hazel Knippelmeyer</i>
Greeters	<i>Bob Becker, Chuck Volker</i>
Usher Team	<i>George Hauk</i>
18th Communion Assistant— Bread	<i>Pat Swanson</i>
Prayers of the People	<i>George Moore</i>
Projectionist	<i>Hazel Knippelmeyer</i>
Communion Assistants—Wine	<i>Cathie Floegel, Joe Makowski</i>
Greeters	<i>Bruce Fowler, Marilyn & Bob Burns</i>
Usher Team	<i>Shirley Carrington</i>
25th Communion Assistant— Bread	<i>Shirley Carrington</i>
Prayers of the People	<i>Martha Applegate</i>
Projectionist	<i>Marie Handley</i>
Communion Assistant—Wine	<i>Marilyn Burns & Loraine Winger</i>
Greeters	<i>Darcy Barghols, Marge Hersom, Gene & Hazel Knippelmeyer</i>
Usher Team	<i>Chuck Hersom</i>

OCTOBER 2009

Sun	Mon	Tue	Wed	Thu	Fri	Sat
<p>4</p> <p>9:00 a.m. Worship Service 10:25 a.m. Sunday School 4:00 p.m.-5:30 p.m. SLTA— First Module—“Introduction to the Christian Faith”</p>	<p>5</p> <p>9:00 a.m. Counters 2:45 p.m. TACO 5:30 p.m. Finance 6:00 p.m. Executive Council 7:00 p.m. Council</p>	<p>6</p> <p>9:00 a.m. Facilities Meet Noon WELCA 6:00 p.m. Worship Arts 6:30 p.m. Special O. 7:00 p.m. Parish Ed</p>	<p>7</p> <p>5:30 p.m. WNL 6:15 p.m. Bible Study 7:00 p.m. Choir</p>	<p>1</p> <p>10:00 a.m. Outreach</p>	<p>2</p>	<p>3</p> <p>7:00 a.m. Men's Bible Study 9-10 a.m. Altar Guild</p>
<p>11</p> <p>9:00 a.m. Worship Service 10:25 a.m. Sunday School 4:00 p.m.-5:30 p.m. SLTA— First Module—“Introduction to the Christian Faith”</p>	<p>12</p> <p>Columbus Day-Holiday Office Closed</p>	<p>13</p> <p>9:00 a.m. Facilities crew 9:00 a.m. Counters 9:30 a.m. Project day 6:30 p.m. Special Olympics 7:00 p.m. Rebekah Circle</p>	<p>14</p> <p>5:30 p.m. WNL 6:15 p.m. Bible Study 7:00 p.m. Choir</p>	<p>15</p> <p>10:00 a.m. Deborah Circle</p>	<p>16</p> <p>DEADLINE FOR PARISH BUILDER ARTICLES</p>	<p>17</p> <p>7:00 a.m. Men's Bible Study 9-10 a.m. Altar Guild</p>
<p>18</p> <p>9:00 a.m. Worship Service 10:25 a.m. Sunday School 4:00 p.m.-5:30 p.m. SLTA— First Module—“Introduction to the Christian Faith”</p>	<p>19</p> <p>9:00 a.m. Counters</p>	<p>20</p> <p>9:00 a.m. Facilities crew 6:30 p.m. Special O.</p>	<p>21</p> <p>5:30 p.m. WNL 6:15 p.m. Bible Study 7:00 p.m. Choir</p>	<p>22</p>	<p>23</p>	<p>24</p> <p>7:00 a.m. Men's Bible Study 9-10 a.m. Altar Guild</p>
<p>25</p> <p>Reformation Sunday 9:00 a.m. Worship Service 10:15 a.m. Special Cong. Meet 10:25 a.m. Sunday School 4:00 p.m.-5:30 p.m. SLTA— First Moduluh”</p>	<p>26</p> <p>9:00 a.m. Counters</p>	<p>27</p> <p>9:00 a.m. Facilities crew 9:30 a.m. Project day 6:30 p.m. Special O.</p>	<p>28</p> <p>5:30 p.m. WNL 6:15 p.m. Bible Study 7:00 p.m. Choir</p>	<p>29</p>	<p>30</p>	<p>31</p> <p>7:00 a.m. Men's Bible Study 9-10 a.m. Altar Guild</p>

ST. LUKE'S LUTHERAN CHURCH
5150 WILSON STREET
LA MESA, CA 91942

Phone: 619-463-6633
Webpage: www.st-lukes-la-mesa.org
Email: office-sllc@att.net

NON-PROFIT
ORGANIZATION
U.S. POSTAGE
PAID
EL CAJON, CA
PERMIT NO 262

Dated Material
September 2009

ADDRESS SERVICE REQUESTED

WORSHIP: SUNDAYS—9:00 a.m.
Sunday school for all ages at
10:30 am, at various locations

Also

“An Introduction to the Christian Faith”
The First Module of St. Luke’s Theological Academy
Sundays, from 4:00 pm to 5:30 pm in the Church Library.

St. Luke’s Mission Statement:

We are called as a community of Christians
saved by grace
—through faith alone in Jesus Christ—
to spread the Holy Gospel
in word, sacrament, and action
solī deo gloria.